



nuvimedix™

A New Vision for Remote Health Care

PRODUCT MATRIX

CLINIC STATION



Contains:
Computer with
Nuvimedix® Software

True HD 1080p Video
Conferencing System
with PTZ camera

Flat Screen 42" Monitor

Vital Signs monitor:
• BP • Pulse • SPO2
• MAP • Temperature
• Weight • Height • BMI

Electronic Stethoscope

Body Imaging high defi-
nition diagnostic camera
includes:

- Otoscope • General Exam • Dermoscope
- Optional Eye Fundus

12-lead ECG Glove

Glucomerter /A1C

Anti-Microbial top cart

MOBILE CLINIC STATION



Contains:
Computer with
Nuvimedix® Software

True HD 720p Video
Conferencing System
with focus camera

Flat Touch Screen 19"
Monitor

Vital Signs monitor:
• BP • Pulse • SPO2
• MAP • Temperature
• Weight • Height • BMI

Electronic Stethoscope

Body Imaging high
definition diagnostic
camera includes:
• Otoscope • General
Exam • Dermoscope
• Optional Eye Fundus

12-lead ECG Glove

Glucomerter /A1C

Global AC/ 12VDC
Rugged case

PRACTITIONER STATION



Contains:
Computer with
Nuvimedix® Software
with adjustable position
screen

True HD 1080p Video
Conferencing System
with PTZ camera

Flat Screen 42" Monitor

Closed-back high-fidelity
superior headphones

Ergonomic Desk
Workstation

MOBILE PRACTITIONER STATION



Contains:
Laptop Computer with
Nuvimedix® Software

Video Conferencing
Software

Closed-back high-fidelity
superior headphones

Rugged Case

PRACTITIONER LAPTOP STATION



Contains:
Laptop Computer with
Nuvimedix® Software

Video Conferencing
Software

Closed-back high-fidelity
superior headphones

DATABASE SERVER



Contains:
Cloud-based, ORACLE
on Solaris for perfor-
mance, reliability and
efficiency.

Secure encryption EHR
data transmission- up to
AES-256bit, FIPS 197.

Robust server hardware
architecture.

Data security on mirrored
pairs of disks.

Optional off-premise,
continuous backup or
local backup storage
devices are available.

Flexible expansion by
simply adding storage
devices.

Complete, unalterable
audit trail of all activities.



POINT OF CARE ROUTINE MULTI-CHEMISTRY AND ELECTROLYTE BLOOD ANALYZER



Routine multi-chemistry and electrolyte test results are obtained quickly and easily in virtually any treatment setting with Abaxis Piccolo portable analyzer.

· A fully automated system with walk away operation

· Uses a small sample size (0.1cc of whole blood, serum or plasma)

· No sample pre-treatment is needed

· Results are available in approximately 12 minutes.

· The built in intelligent

Quality Control meets CLIA and NCCLS requirements for daily control testing

· The Piccolo Xpress delivers up to 24 individual tests including CLIA-waived lipids, liver enzymes and glucose monitoring

· Results are transferred to the patient's EHR in the Nuvimedix database enabling physicians to rapidly obtain critical diagnostic information at the point-of-care

· No special operating skills are needed to run the Piccolo Xpress

· Easy to use color touch screen guides the operator through the process

· Flexible alpha – numeric data entry options and analyzer settings

· Self-contained, disposable reagent discs are easy to handle

· Every reagent disc automatically self-calibrates

· Integrated intelligent Quality Control (iQC) checks performance and accuracy

· Requires very little maintenance

Panels available:

- Comprehensive Metabolic Panel (Waived) – ALB, ALP, ALT, AST, BUN, Ca, Cl-, CRE, GLU, K+, Na+, TBIL, tCO₂, TP
- Basic Metabolic Panel (Waived) – BUN, Ca, Cl-, CRE, GLU, K+, Na+, tCO₂
- Lipid Panel (Waived) – CHOL, CHOL/HDL*, HDL, LDL*, TRIG, VLDL*
- Lipid Panel Plus (Waived) – ALT, AST, CHOL, CHOL/HDL*, GLU, HDL, LDL*, TRIG, VLDL*
- Liver Panel Plus (Waived) – ALB, ALP, ALT, AMY, AST, GGT, TBIL, TP
- General Chemistry 6 (Waived) – ALT, AST, BUN, CRE, GGT, GLU
- General Chemistry 13 (Waived) – ALB, ALP, ALT, AMY, AST, BUN, Ca, CRE, GGT, GLU, TBIL, TP, UA
- Electrolyte Panel (Waived) – Cl-, K+, Na+, tCO₂
- Kidney Check (Waived)

- BUN, CRE
- Renal Panel (Waived) – ALB, BUN, Ca, Cl-, CRE, GLU, K+, Na+, PHOS, tCO₂
- MetLyte 8 Panel (Waived) – BUN, CK, Cl-, CRE, GLU, K+, Na+, tCO₂
- Hepatic Panel – ALB, ALP, ALT, AST, DBIL, TBIL, TP
- Basic Metabolic Panel Plus – BUN, Ca, Cl-, CRE, GLU, K+, Na+, tCO₂, Mg, Lactate Dehydrogenase
- MetLyte Plus CRP – BUN, CK, Cl-, CRE, CRP, GLU, K+, Na+, tCO₂
- BioChemistry Panel Plus – ALT, ALB, ALP, AMY, AST, CRP, Ca, CRE, GGT, GLU, TP, BUN, UA
- * Calculated

DIGITAL NON-MYDRIATIC FUNDUS LENS



Avoids unnecessary mydriatic medications and side effects. Images are taken, and processed digitally and stored in the Nuvimedix EHR database.

Spec & Features:

• Dimensions: 16 x 9 x 20 cm.

• Weight 400g.

• Camera Display 3.5" full color TFT-LCD.

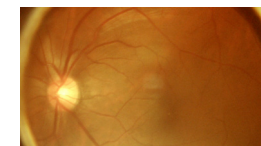
• Camera Resolution: Full HD 1920 x 1080 pixels.

• Field of view: 40°.

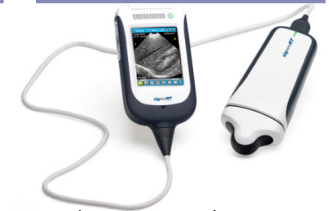
• Diopter Compensation: -20D to +20D.

• Light source: Infrared and white LED.

• FDA 510k / CE certified Class-II Medical Device



HAND-HELD ULTRASOUND



Real time B-Mode, M-Mode and PW Doppler, volume measurements at point of care with Sonimage P3 by KM hand-held scanner. Quick and simple e-FAST, pneumothoraces, AAA screening, bladder volumes, basic pregnancy assessment and ruling in obvious pathology.

Transducers:

- S3-5 Sector Annular (3-5 MHz) B/M Mode + PW Doppler.

S3 Sector (3 MHz) B/M Mode + PW Doppler
• Base Unit Dimensions: 11.5 x 6.8 x 2.0 cm.

• Weight 400g.

